

I 06:20 m
 II 01:40 m
 III 02:38 m
 IV 03:20 m

04:40-04:18

03:40 → m.
 03:20

op. 21/22 out.
 mei / june / november

mt. 34-36 I 11:12

300 s
 100 s
 150 s
 200 s

13:05 = 13:20
 ± 14:00

tot.

I = 36 = 07:08
 II = 152 = 01:40 // 146! 01:38
 III = 80 = 02:56 my oak.
 IV = 36 = 03:30
 tot. = 15:20



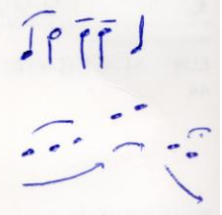
132-37 m

d = 32/40

I = mf

13:05 ± 14:00

mt. 34/36 11:12

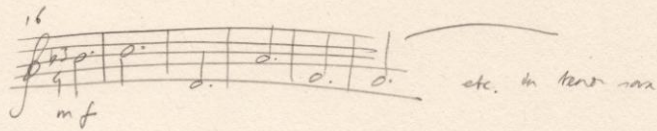


2 sept. 2019

168H
 Sarah Neutkens

Not es on Not es

komponeren met A+B en S+T
 geen b b



mt. 14-30 mf, dan f want NIET VERGETEN INTERENEN

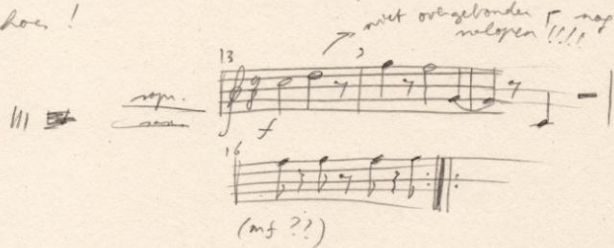
- duidelijk giten bloemwiel

2x partituum S+musici (getransponeerd, 4x) + partijler

2x partituum zelf (met getransponeerd, 4x) (2 partijen ext.)

- BLAUWE MAPPEN!!!! → met vepeten te labelen + blaadjes!

- hoe!



- giten 00
- musiel checker 20
- draad balder 20
- 1x geen riter,
- gijrbrompente
- 1x geen salon, ei;
- etc.
- 4x geen voorleer
- 1x cake / kaart
- 6x water / thee /
- heffe / frie.

$\text{♩} = 152$

Handwritten musical score for four staves. The first staff is in bass clef with a key signature of one flat and a 4/4 time signature. It contains a melody of eighth notes with a *mf* dynamic marking. The second staff is in treble clef with a 5/4 time signature and contains whole rests. The third staff is in bass clef with a key signature of one flat and a 4/4 time signature, containing a melody of eighth notes with a *mf* dynamic marking. The fourth staff is in treble clef with a 5/4 time signature, containing a melody of eighth notes with a *mf* dynamic marking. The first four measures are filled with music, and the remaining staves are empty.

Ten empty musical staves for writing.

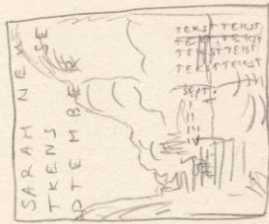
sheet (colored)

// F



with of full colour
(possibly?)

// B



with of full colour,
see possible

200 x // 250x

